

## Model SAM Mini 600-2

Project Name: [Click or tap here to enter text.](#)

Location: [Click or tap here to enter text.](#)

Engineer: [Click or tap here to enter text.](#)

Submitted To: [Click or tap here to enter text.](#)

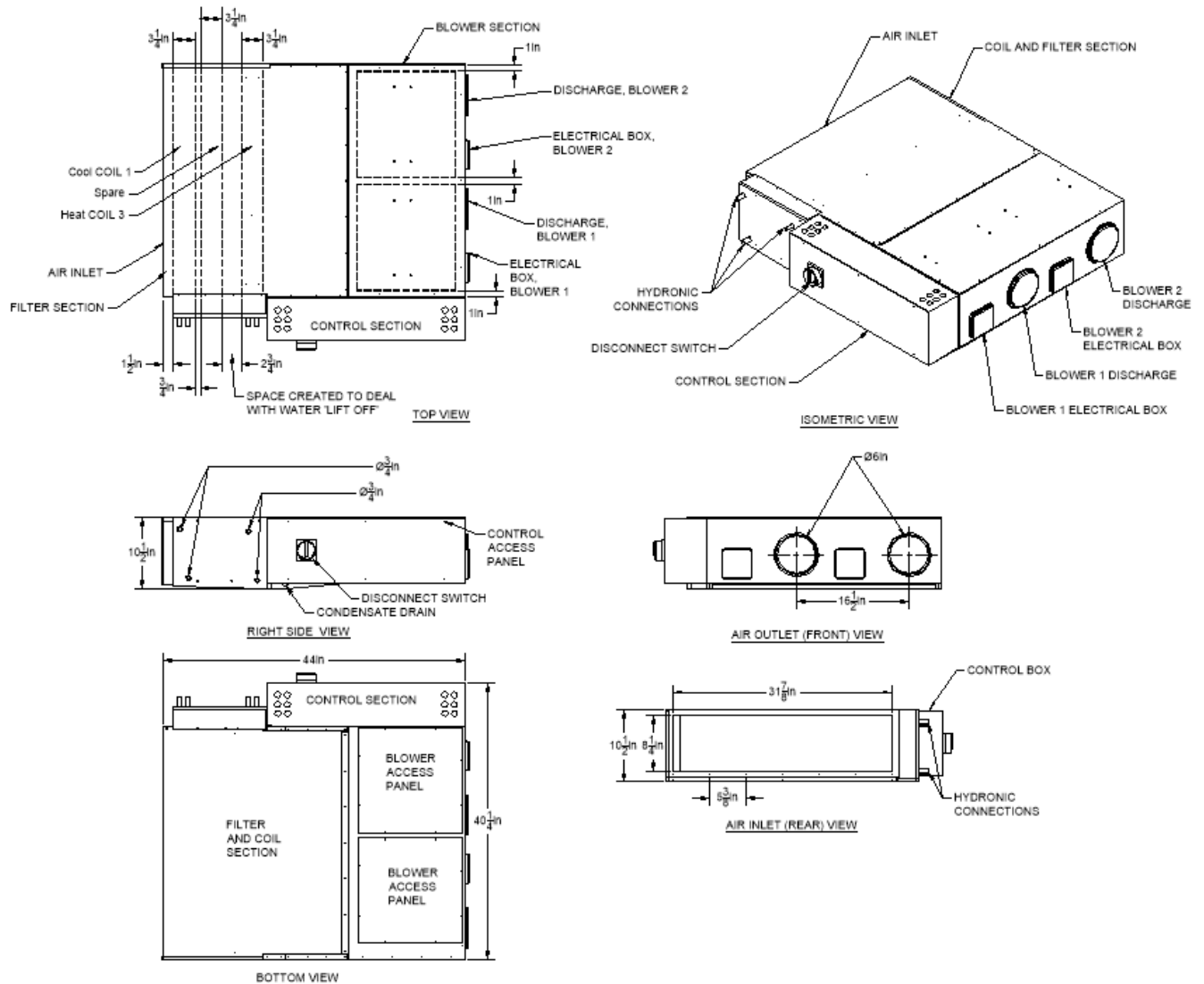
Reference: [Click or tap here to enter text.](#)

Submitted By: [Click or tap here to enter text.](#)

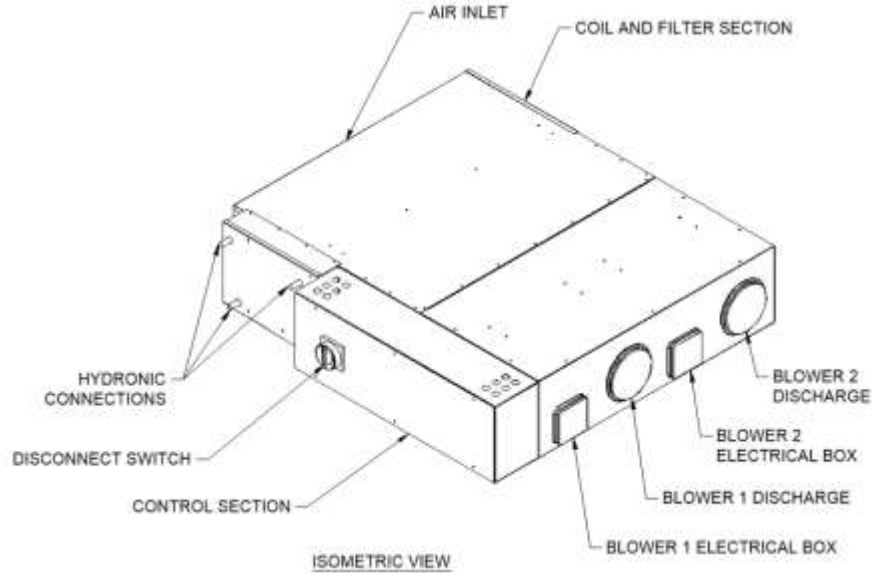
Date: [Click or tap to enter a date.](#)

Equipment Tag: [Click or tap here to enter text.](#)

For:  File  Resubmit  Approval  Other [Click or tap here to enter text.](#)



## Model SAM Mini 600-2



### Nominal Performance Data

Electrical Data			
Electrical Supply	MCA	RLA	HP
120 V/1P	3.25	2.0	0.322

### Cool and Heat data shown using both coils

Cooling Performance Data ** static shown is max system static							
Max CFM	Max static (")	Cool Cap @ (40F) (4.4C) (btu/h)	Cool Cap @ (36F) (2.2C) (btu/h)	Ent air (F) DB / WB	Water Flow (GPM)	leaving air (F) DB / WB	Water Static (' ft)
600	0.4"	35,800		80 / 70	13.00	51.1/50.8	4.9'
600	0.4"		39,440	80/70	13.00	48.5/48.3	4.9'
	Sensible	19,180	20,880				
	Latent	16,620	18,560				
	Condensate	15.27#/h	17.08#/h				

Heating Performance Data						
Max CFM	Max Air static (")	Ent Air (F)	Heat Cap @ (120F) (48.9C) (btu/h)	Heat Cap @ (160F) (71.1C) (btu/h)	Water Flow (GPM)	Water Static (' ft)
600	0.4"	55	33,880		6.50	4.41'
600	0.4"			55,590	6.50	4.25'

### Options

- 3-way Belimo Diversion valve for max flow and performance control.
- Variable speed blower control for custom air flow.