

Model SAM Mini 300-3

Project Name: Click or tap here to enter text.

Location: Click or tap here to enter text.

Engineer: Click or tap here to enter text.

Submitted To: Click or tap here to enter text.

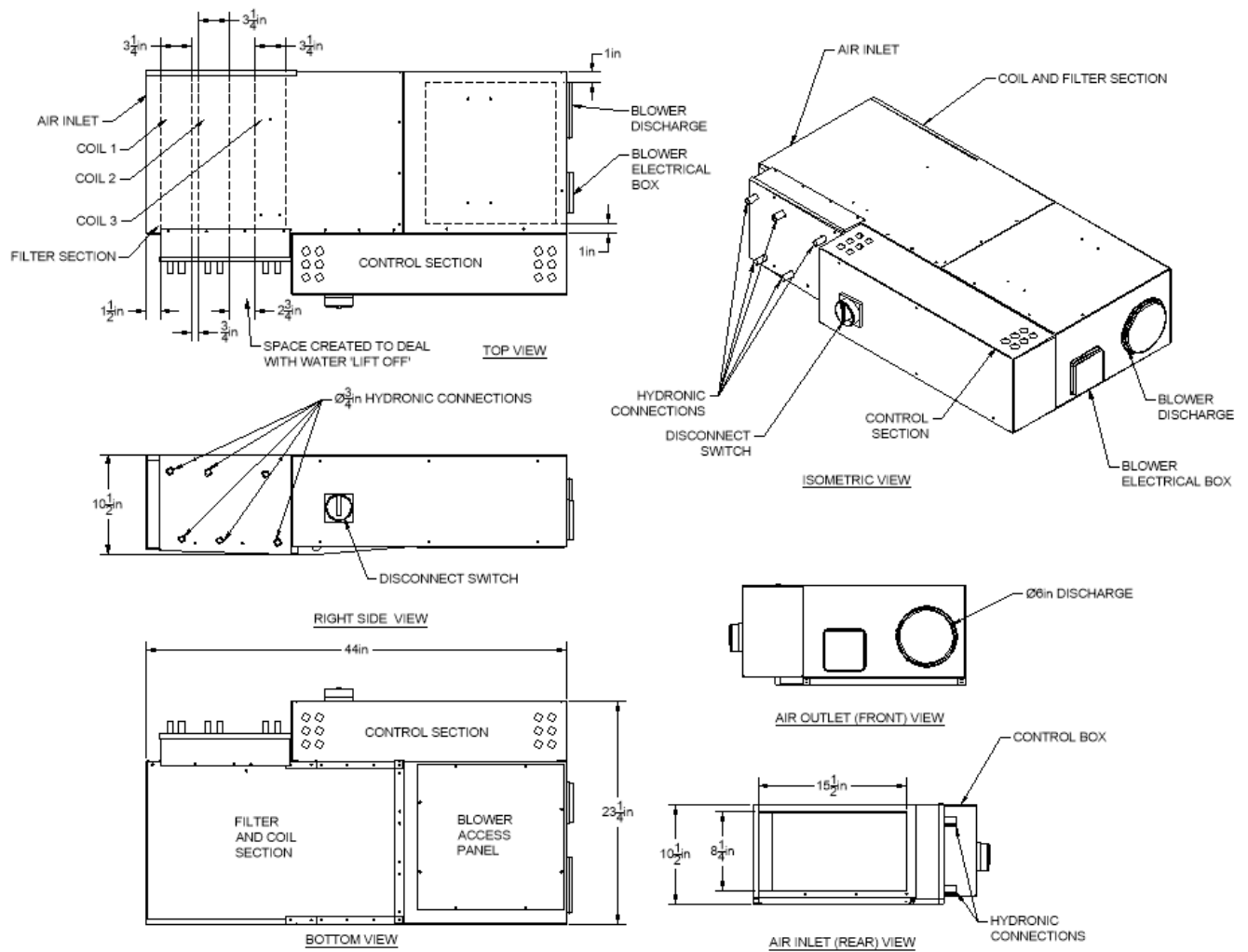
Reference: Click or tap here to enter text.

Submitted By: Click or tap here to enter text.

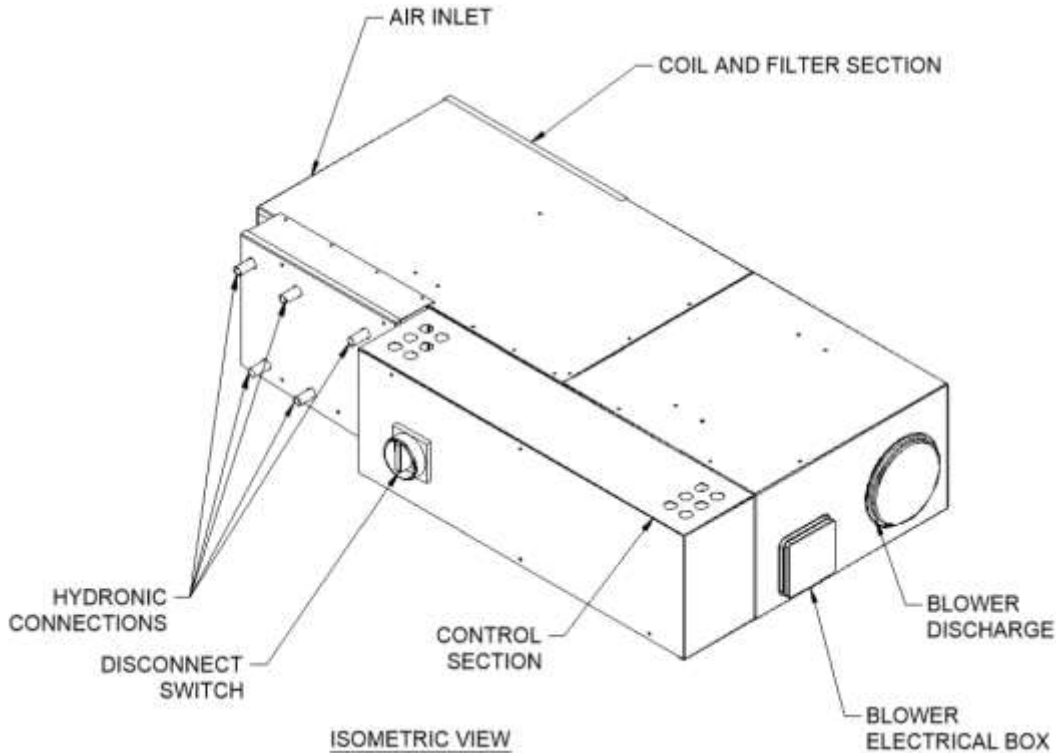
Date: Click or tap to enter a date.

Equipment Tag: Click or tap here to enter text.

For: File Resubmit Approval Other [Click or tap here to enter text.](#)



Model SAM Mini 300-3



Nominal Performance Data

Electrical Data			
Electrical Supply	MCA	RLA	HP
120 V / 1P	2.25	1.0	0.161

This unit can be supplied in various configurations, Primary use as a Dehumidification Unit using coils 1 and 2 for cooling, then coil 3 as Reheat. In winter coil 3 transforms into maximum heating after primary dehumidification cycle.

"A" Cooling Performance Data "Summer" ** static shown is max system static									
Max CFM	Max static (")	ENT Air (F) DB / WB	Cool Cap @ (40F) (4.4C) Coils 1 & 2 (btu/h)	Cool Cap @ (36F) (2.2C) Coils 1 & 2 (btu/h)	Cool Temp (F)	Reheat COIL # 3 (76F) (btu/h)	LEAVE air (F) DB / WB	Water Flow (GPM)	Water Static (' ft)
300	0.4"	80 / 67	15,220		50/49	4,420	64/55.4	8/4	1.72'
						(78f)			
300	0.4"	80 / 67		16,980	48/47	5,200	64/55	8/4	1.72'
	Sensible		9,760	10,590					
	Latent		5,460	6,390					
	Condensate		5.03#/h	6.77#/h					

Shoulder season dehumidification is heavily impacted by the relationship of temperature and humidity levels.

"B" Dehumidification Performance Data "Shoulder" ** static shown is max system static									
Max CFM	Max static (")	ENT Air (F) DB / WB	Cool Cap @ (40F) (4.4C) Coils 1 & 2 (btu/h)	Cool Cap @ (36F) (2.2C) Coils 1 & 2 (btu/h)	Cool Temp (F)	Reheat Coil # 3 (90F) (btu/h)	LEAVE air (F) DB / WB	Water Flow (GPM)	Water Static (' ft)
300	0.4"	65 / 55	7,610		45/45	8,680 (97f)	72/56.5	8/4.0	1.72'
300	0.4"	65 / 55		9,400	42.6/42	9,520	71.8/55	8/4.0	1.72'
	Sensible		6,420	7,350					
	Latent		1190	2,050					
	Condensate		1.09#/h	1.9#/h					

"C" Heating Performance Data "Winter" ** static shown is max system static									
Max CFM	Max static (")	ENT Air (F) DB / WB	Cool Cap @ (40F) (4.4C) Coils 1 (btu/h)	Cool Cap @ (36F) (2.2C) Coils 1 (btu/h)	Cool Temp (F)	Reheat Coils # 2 & 3 (120F) (btu/h)	LEAVE air (F) DB / WB	Water Flow (GPM)	Water Static (' ft)
300	0.4"	65 / 55	4,910		51/48.3	17,891 (120f)	105 / 68	4/8	4.9'
300	0.4"	65 / 55		6,110	49/46.5	18,395	105/67.5	4/8	4.94'
	Sensible		4,500	5,140					
	Latent		410	970					
	Condensate		0.37#/h	0.9#/h					

Options									
<ul style="list-style-type: none"> • 3-way Belimo Diversion valve for max flow and performance control. • Variable speed blower control for custom air flow. • Individual coils (3) can be factory set up for separate coil control coil: Coil 1 cool, Coil 2 dehumidification, Coil 3 reheat for DEHUMUDIFICATION purposes. 									